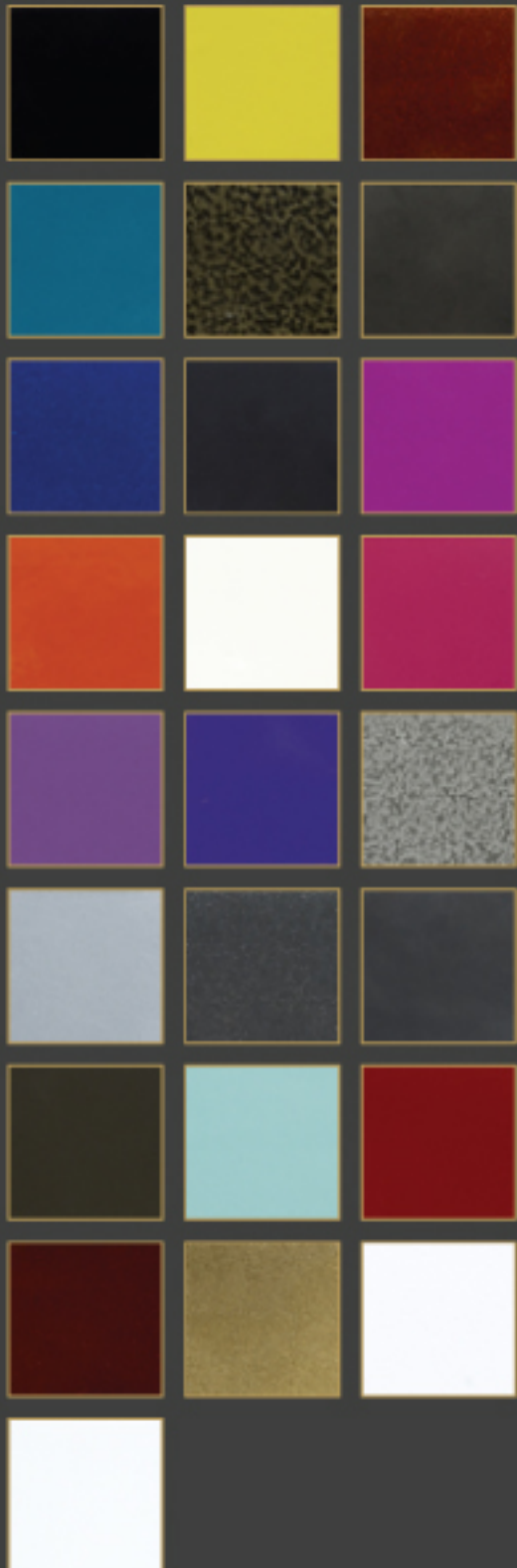


SWESNA  
los angeles

### Sunrize

Available in the following finishes:



### Dance With Me

Susanna's first mirror design was inspired by a combination of the sparkle reflections from a disco ball, the massiveness of heavy duty chains and the solid strength of industrial metal.

Disco balls always made Susanna happy and want to dance. The small pieces of mirrored glass laid upon the metal create another shape when combined and reflect the surrounding light in any room. While the chains and metal frame keep the mirror grounded and substantial.



**Materials used:** Light (silver color) industrial metal tubes, 1" square hand-cut mirrored glass, industrial chains.

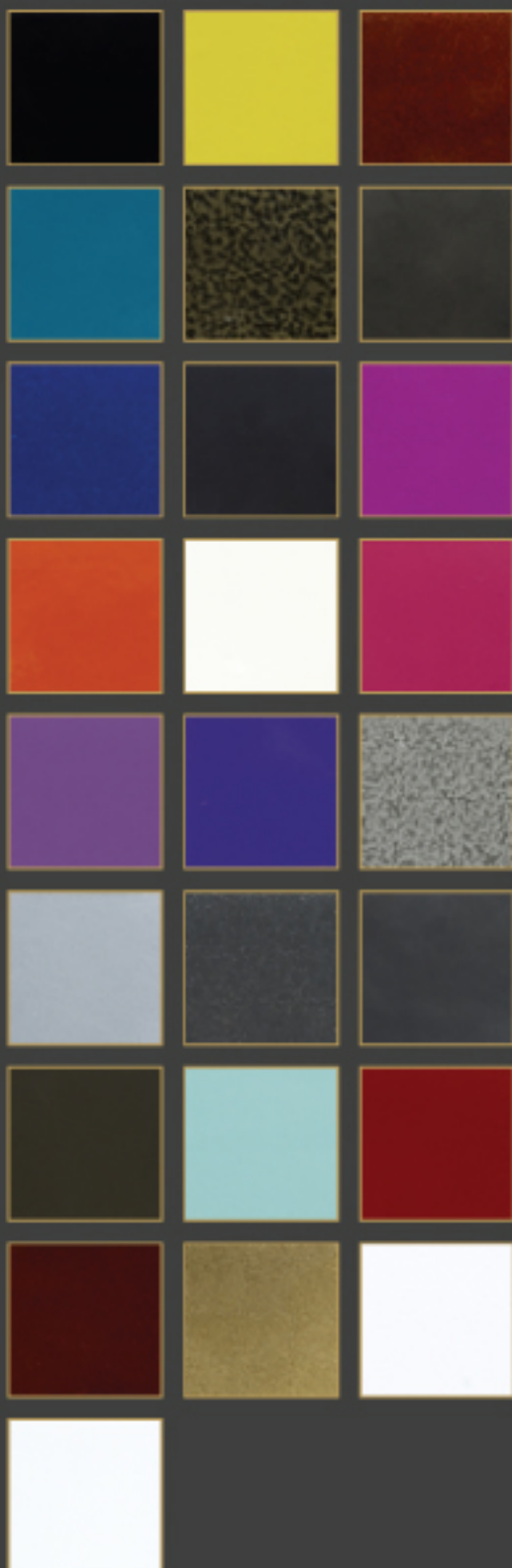
- Overall size: 36" x 36" x 1 1/2" frame thickness
- 5" mirrored glass frame all around the mirror.

*NOTE: All mirrors can be made in custom sizes and in any color shown. We also design for specific projects within our styles, but not limited to mirrors shown on this web site.*

*All mirrors are hand crafted and hand welded in Los Angeles, California.*

### Sunrize

Available in the following finishes:



### Franky

Begun as a creation of circles overlapping to create a bigger circle, this mirror evolved into a stunning circular artistic statement. The exposed welding on the charcoal gray metal frame sets off the mirror's reflective warmth.

This unique mirror can be hung on a wall or from chains.

**Materials used:** Industrial metal, high quality mirror

- Overall size: 36" diameter with 6" metal overlapping circles
- Mirror size: 21" diameter

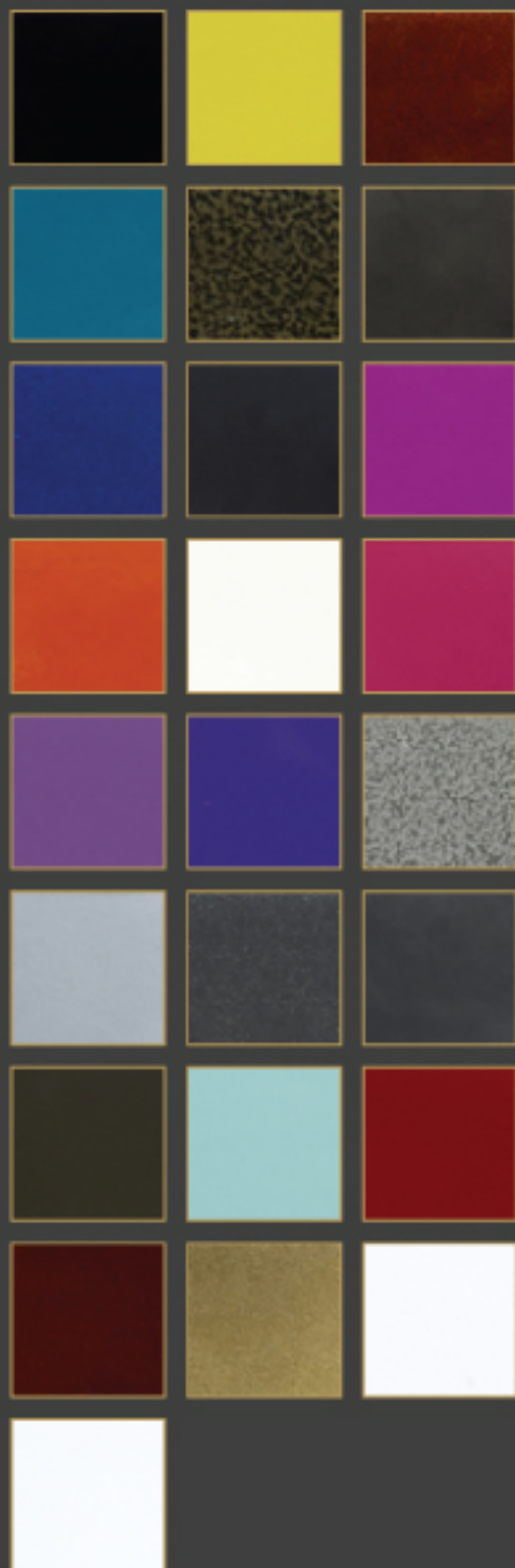
*NOTE: All mirrors can be made in custom sizes and in any color shown. We also design for specific projects within our styles, but not limited to mirrors shown on this web site.*

*All mirrors are hand crafted and hand welded in Los Angeles, California.*



### Sunrize

Available in the following finishes:



### Neptune

Susanna continues her theme of eyes watching back at you in this distinctly accented round mirror. The mirror itself is set far back in the frame with a 6" ledge, allowing only front mirror views.

The mirror frame also has details on its sides and is constructed with two exposed industrial bolts that add still another dimension.

**Materials used:** high-gloss coated dark charcoal colored industrial metal, high quality mirror, industrial chain & bolts.



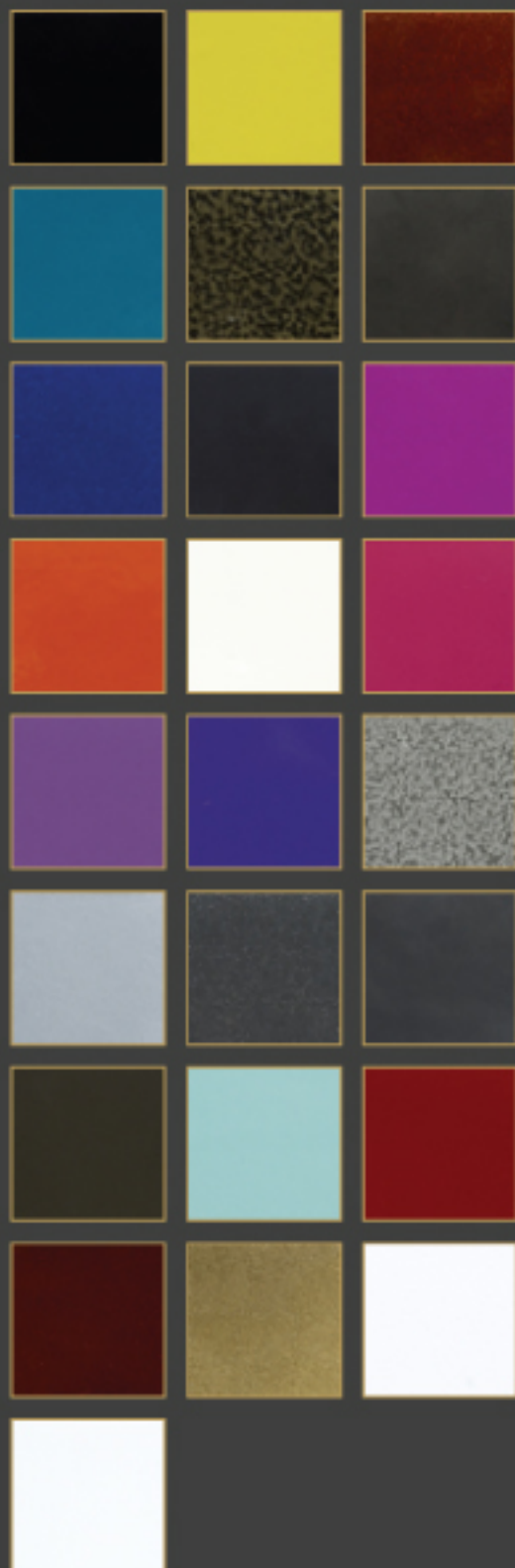
- Overall size: 36" x 36" x 6" deep
- Mirror size 34" x 34"
- Mirror can be mounted on the wall or hang on chains from a ceiling or wall block.

*NOTE: All mirrors can be made in custom sizes and in any color shown. We also design for specific projects within our styles, but not limited to mirrors shown on this website.*

*All mirrors are hand crafted and hand welded in Los Angeles, California.*

### Sunrize

Available in the following finishes:



### Open Your Eyes

Susanna's vision of eyes looking back at you led to sketches of this unique oval mirror. The mirror itself sets far back in the frame with its 6" ledge, allowing only front mirror views.

The frame also features intricate details on the sides and is constructed with two exposed industrial bolts on either side for added dimension.



**Materials Used:** high-gloss coated dark charcoal colored industrial metal frame, high quality mirror, industrial chain & bolts.

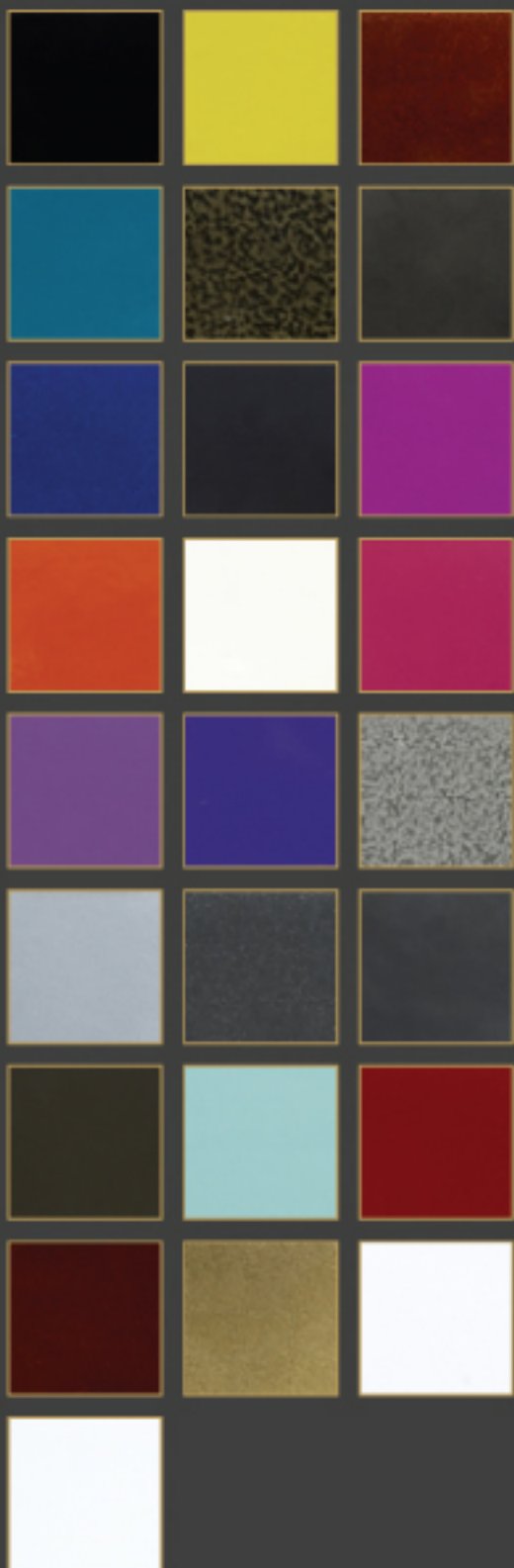
- Overall size: 48" x 30" x 6" deep
- Mirror size: 47" x 29"
- Mirror can be mounted on the wall or hang on chains from a ceiling or wall block.

*NOTE: All mirrors can be made in custom sizes and in any color shown. We also design for specific projects within our styles, but not limited to mirrors shown on this web site.*

*All mirrors are hand crafted and hand welded in Los Angeles, California.*

### Sunrize

Available in the following finishes:



### Opera

Inspired by arias and divas, hand-made glass and Swarovski crystals adorn industrial metal coated in high-gloss black enamel. The stark contrast of black and white gives this mirror its distinctive look that makes a dramatic statement amidst any décor.

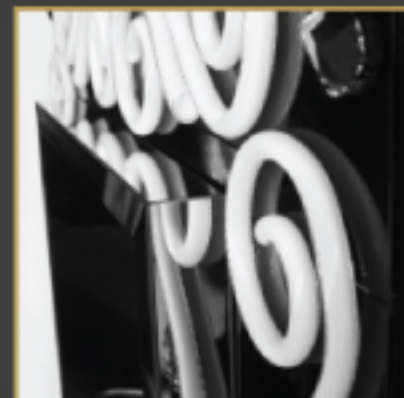
The mirror itself actually comes 2" out of the frame, accentuating all the intricate details of the glass and crystals reflected in the mirror.

**Materials used:** custom, hand-made glass, Swarovski crystals, industrial metal in black enamel industrial metal. Other glass colors available upon request.

- Overall size: 60" x 36" x 2" deep
- Mirror size 48" x 24" x 2" mirror raised above frame
- Mirror can be wall mounted or leaned

*NOTE: All mirrors can be made in custom sizes and in any color shown. We also design for specific projects within our styles, but not limited to mirrors shown on this web site.*

*All mirrors are hand crafted and hand welded in Los Angeles, California.*



## Sunrize

Available in the following finishes:



## Outside the Box

This distinctive mirror truly is "Outside The Box" with its unique inverted design that places the mirror literally inside the frame.

The imperfections on the surrounding metal frame are intended so as to give the piece more personality. The simple shape of this mirror showcases the basic beauty of the industrial metal and glass highlights, set off by its inside/outside mirror placement.

Mirror can be mounted to a wall or hung from a chain. Metal available in all colors shown.

**Materials used:** mirror, industrial metal with high gloss clear enamel coating.

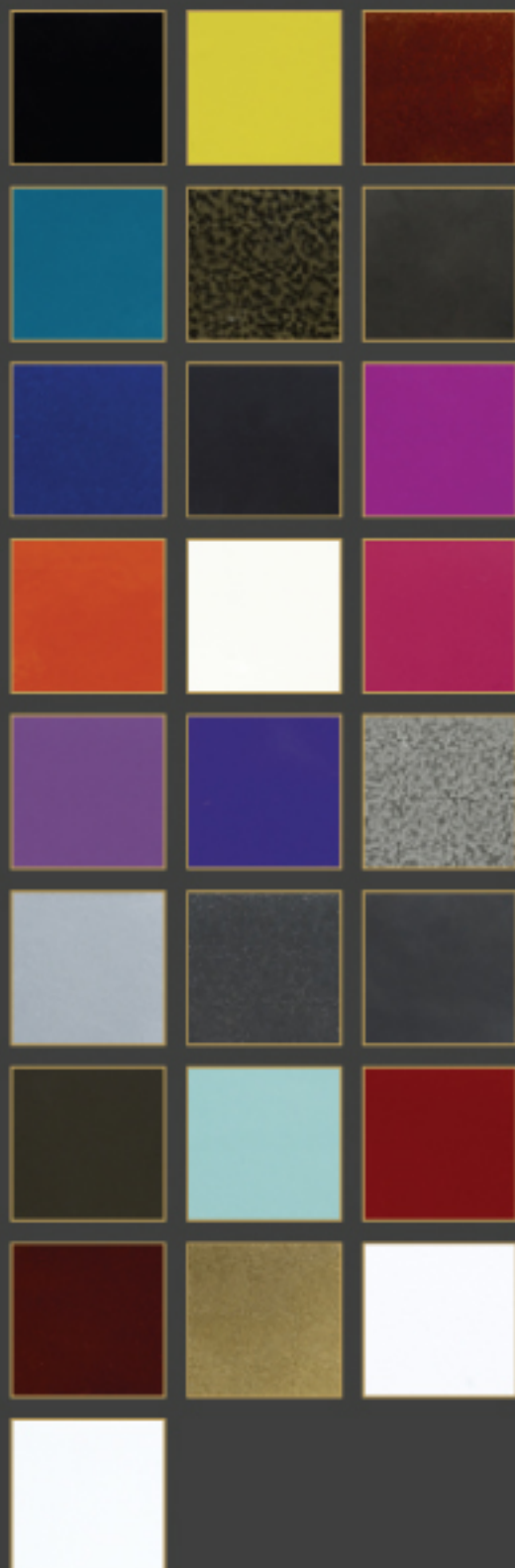
- Frame size: 36" x 36" x 1" frame thickness
- Mirror size: 26" x 26", mirror raised 1 1/2" above frame.
- Custom size available upon request.

*NOTE: All mirrors can be made in custom sizes and in any color shown. We also design for specific projects within our styles, but not limited to mirrors shown on this web site.*

*All mirrors are hand crafted and hand welded in Los Angeles, California.*

## Sunrize

Available in the following finishes:



## See Me

The elegant simplicity of this mirror showcases how mixing different materials often result in something new and unexpected.

Exposed bolts and welding spots on the metal give it an industrial template with the addition of hand cut mirrors on the frame area providing a modern, glamorous appeal.

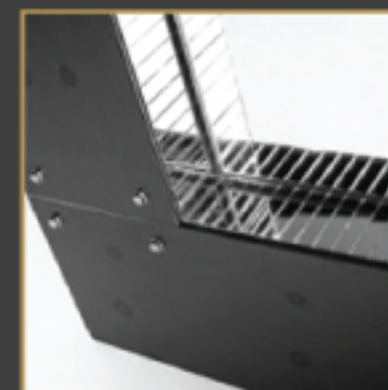
The unique inset design of the mirror creates an almost three dimensional illusion.

**Materials used:** high gloss coated light (silver color) industrial metal, hand-cut mirrored glass, exposed industrial bolts.

- Overall size: 60" x 36" x 2" (frame width)
- Mirror size: 50" x 26"
- Can be mounted on wall or leaned against wall

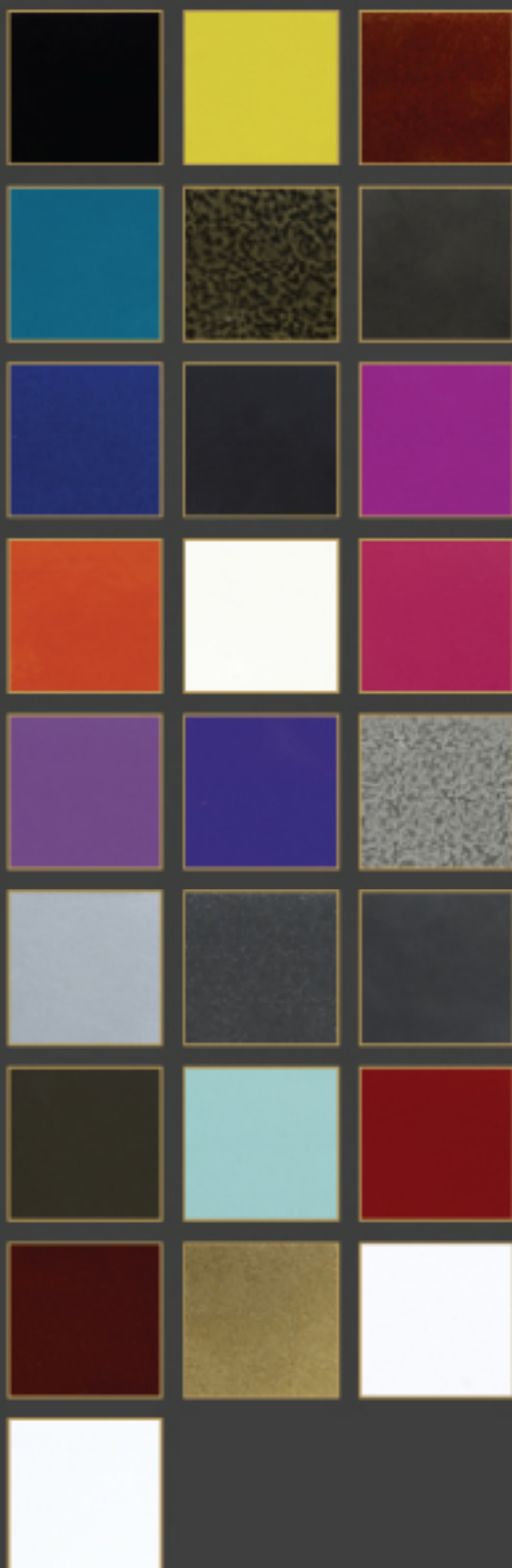
*NOTE: All mirrors can be made in custom sizes and in any color shown. We also design for specific projects within our styles, but not limited to mirrors shown on this web site.*

*All mirrors are hand crafted and hand welded in Los Angeles, California.*



## Sunrize

Available in the following finishes:



## Sunrize

Like its brother, Sunset, the dancing fun of a '70s disco ball provides the inspiration for the Sunrize mirror. Glittering light is taken to another level with its sparkling inlay of 1/2" glass tiles that surround the mirror and add both depth and texture to the piece.

**Materials used:** light (silver color) industrial metal tubes, 1/2" square glass tiles in gray. Industrial grade chain.

- Overall size: 36" x 36" x 1 1/2" frame thickness
- Mirror: 5" of 1/2" square glass tile frame around the mirror

*Note: All mirrors can be made in custom sizes and in any color shown. We also design for specific projects within our styles, but not limited to mirrors shown on this website.*

*All mirrors are hand crafted and hand welded in Los Angeles, California.*

## Sunrize

Available in the following finishes:



## Sunset

Inspired the by the spinning joy of a 70s disco ball, the Sunset mirror takes glittering light to another level with its sparkling inlay of 1/2" glass tiles that surround the mirror and add a textured personality to its one of a kind design.

**Materials used:** light (silver color) industrial metal tubes, 1/2" square glass tiles in gray. Industrial grade chain.

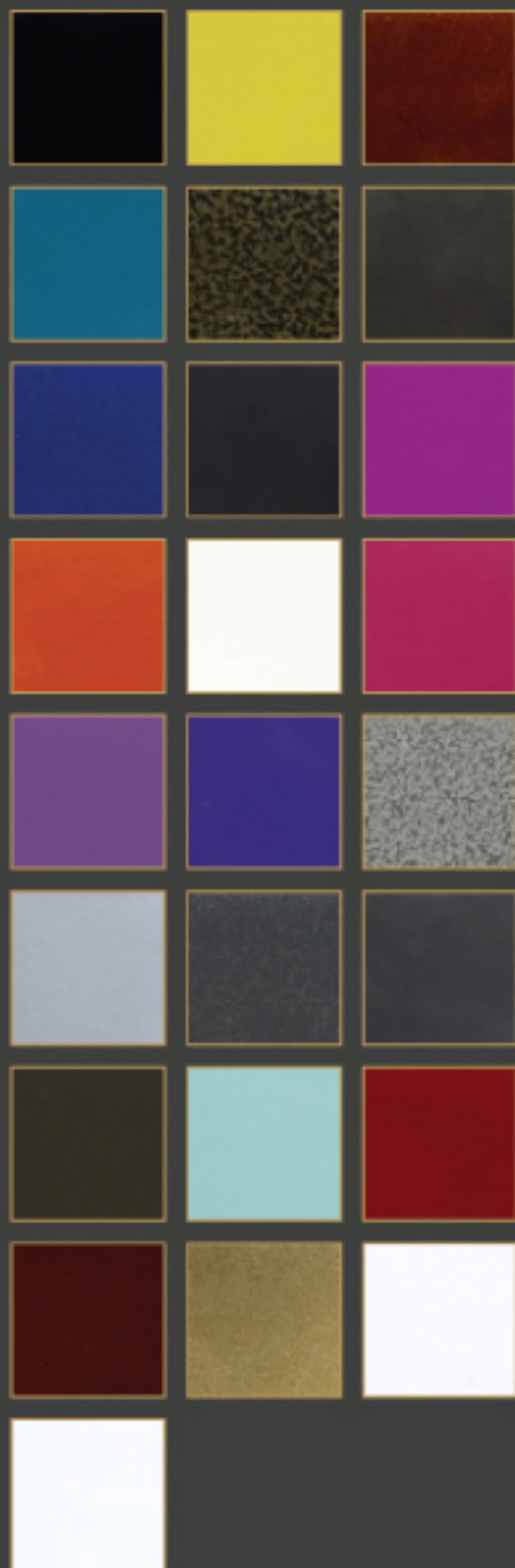
- 36" x 36" x 1 1/2"
- 5" frame of 1/2" square glass tiles

Note: All mirrors can be made in custom sizes and in any color shown. We also design for specific projects within our styles, but not limited to mirrors shown on this website.

*All mirrors are hand crafted and hand welded in Los Angeles, California.*

### Sunrize

Available in the following finishes:



### Wish Upon A Star

We love the marriage of sparkling crystals with the dramatic texture of industrial metal. The oval shape of this mirror imparts a traditional yet glamorous look while the surrounding jeweled touch of embedded crystals gives it a distinct style of its own.

**Materials used:** Swarovski crystals, East European crystals, high-gloss clear coat, dark charcoal industrial grade metal. Industrial chain for hanging. Custom sizes available upon request.

- Total size: 48" x 30" x 1"
- Mirror size: 43" x 25"
- 5" area of crystals surround the frame

*Note: All mirrors can be made in custom sizes and in any color shown. We also design for specific projects within our styles, but not limited to mirrors shown on this website.*

*All mirrors are hand crafted and hand welded in Los Angeles, California.*

### Susanna Creates



The artist Susanna has created a dazzling array of mirrored art in a myriad of abstract designs. Her SWESNA collection introduces art that interacts within your inner world every day.

Susanna's inspiration relies on her natural senses and an ongoing fascination with the interplay of basic shapes and elements. The gleam of light, textures in sand, the temptation of crystals and visual strength of metals all come into play in her creative process.

Susanna's passion for design - unique, artistic, unparalleled - knows no bounds; always searching, always discovering. Continually rewarding. This is functional art with no limits.

The SWESNA collection continues Susanna's journey as an artist. One she is quite honored to share with you in your world.

### Your Dream - Susanna Designed



Susanna creates custom designed mirrored art. Mirrors for larger installations. Mirrors whose colors exactly match the style. Mirrors that communicate your personal message.

Consultation with Susanna for your personal SWESNA designed mirror is available - by your email, by your phone.

Bring your dreams to Susanna and indulge your fantasy on a mirrored art creation that enhances your personal world.

### **Your Dream - Susanna Designed**



Susanna creates custom designed mirrored art. Mirrors for larger installations. Mirrors whose colors exactly match the style. Mirrors that communicate your personal message.

Consultation with Susanna for your personal SWESNA designed mirror is available - by your email, by your phone.

Bring your dreams to Susanna and indulge your fantasy on a mirrored art creation that enhances your personal world.

### **Contact Us**

**Please contact us for more information on the SWESNA collection of mirrored art.**

**We are available for consultation and more detailed product descriptions by email any time**

**[susannah@swesna.com](mailto:susannah@swesna.com)**